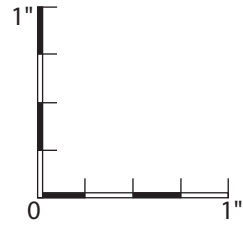


1a



Please use this scale to verify that you are printing at 100%

Pfaff 160th Anniversary Christening Gown and Child's Dress

©2022 Classic Sewing Magazine

FRONT BODICE - SIZE 9M-12M

Cut 1 on Fold
1/4" seams unless otherwise indicated

9-12M

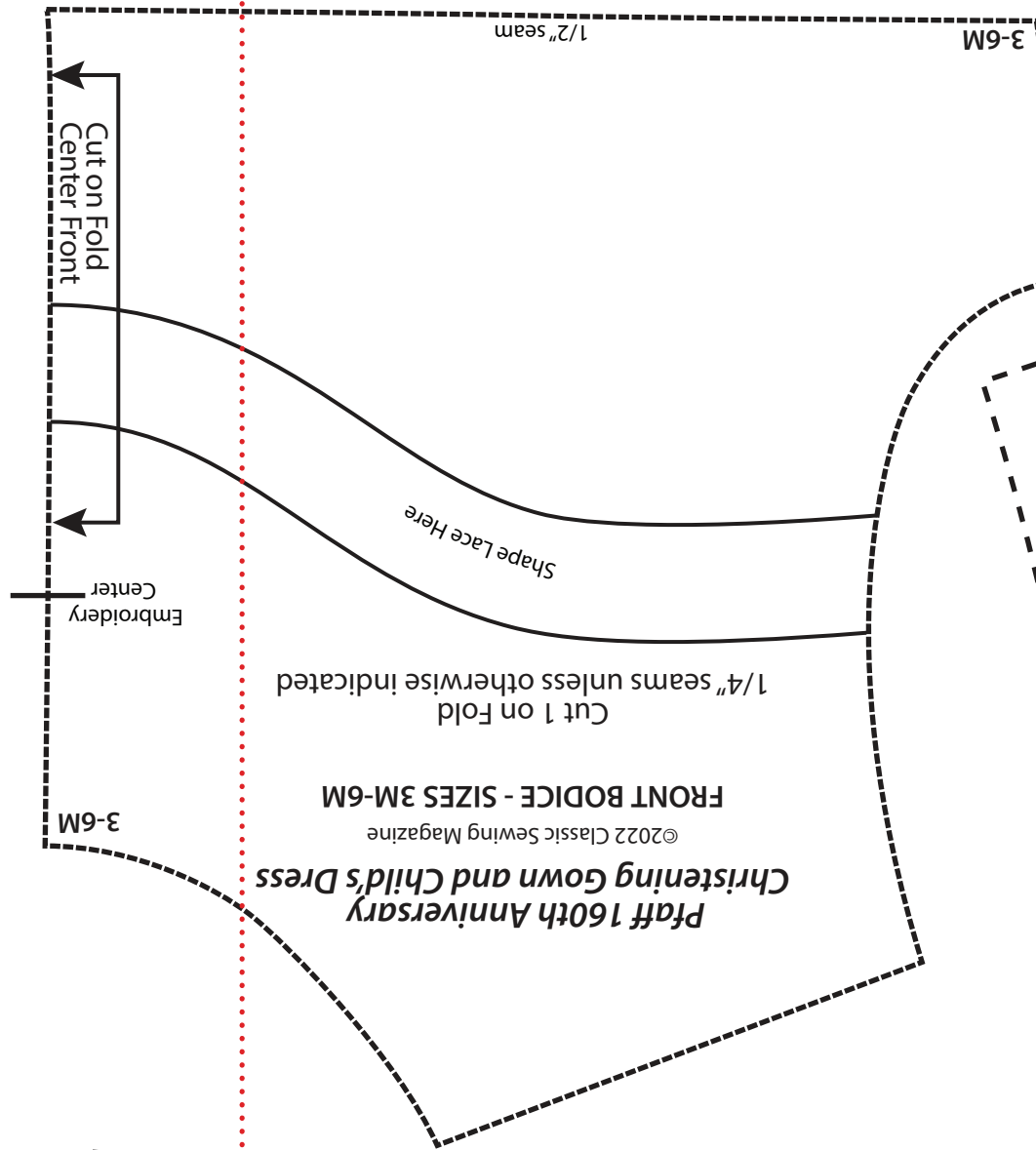
Shape Lace Here

Embroidery Center

Cut on Fold
Center Front

9-12M

1/2" seam



Pfaff 160th Anniversary Christening Gown and Child's Dress

©2022 Classic Sewing Magazine

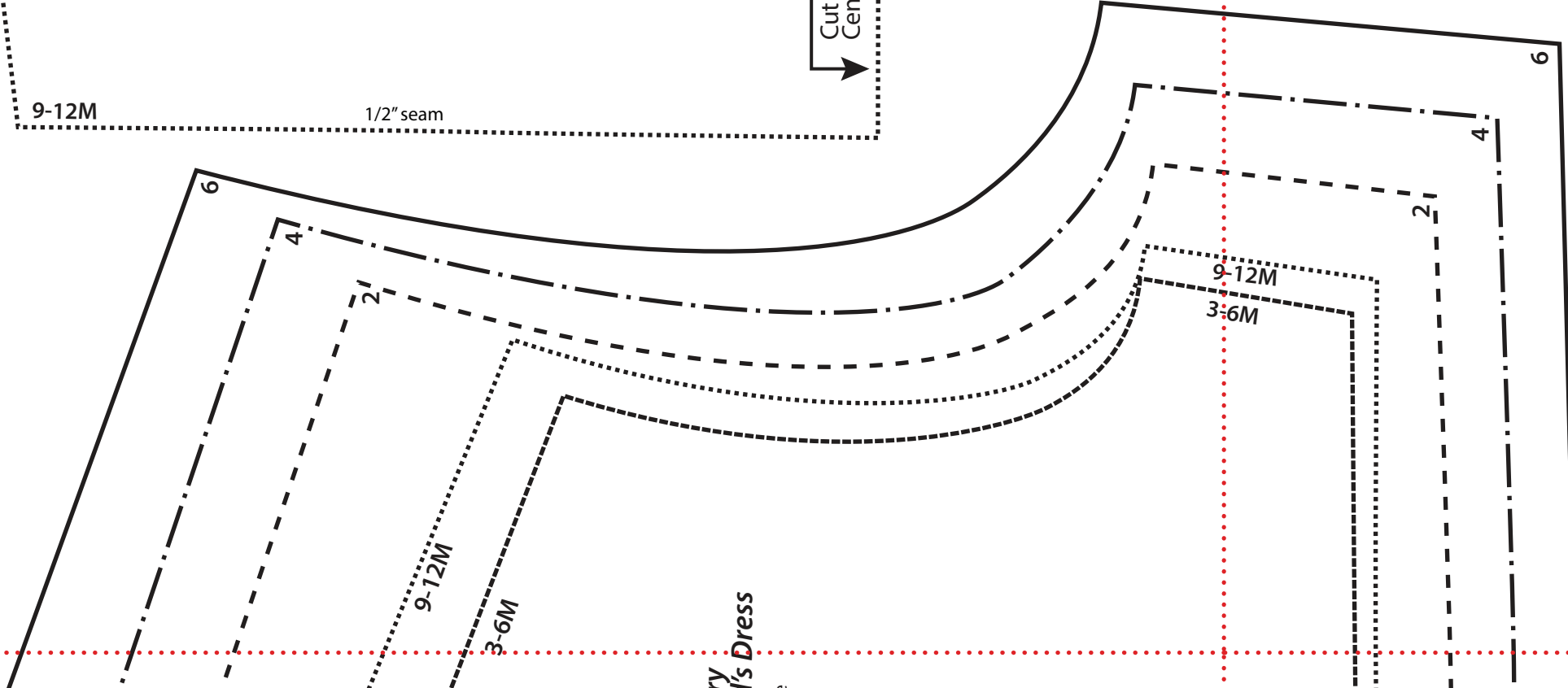
FRONT BODICE - SIZE 2

Cut 1 on Fold
1/4" seams unless otherwise indicated

Shape Lace Here

2

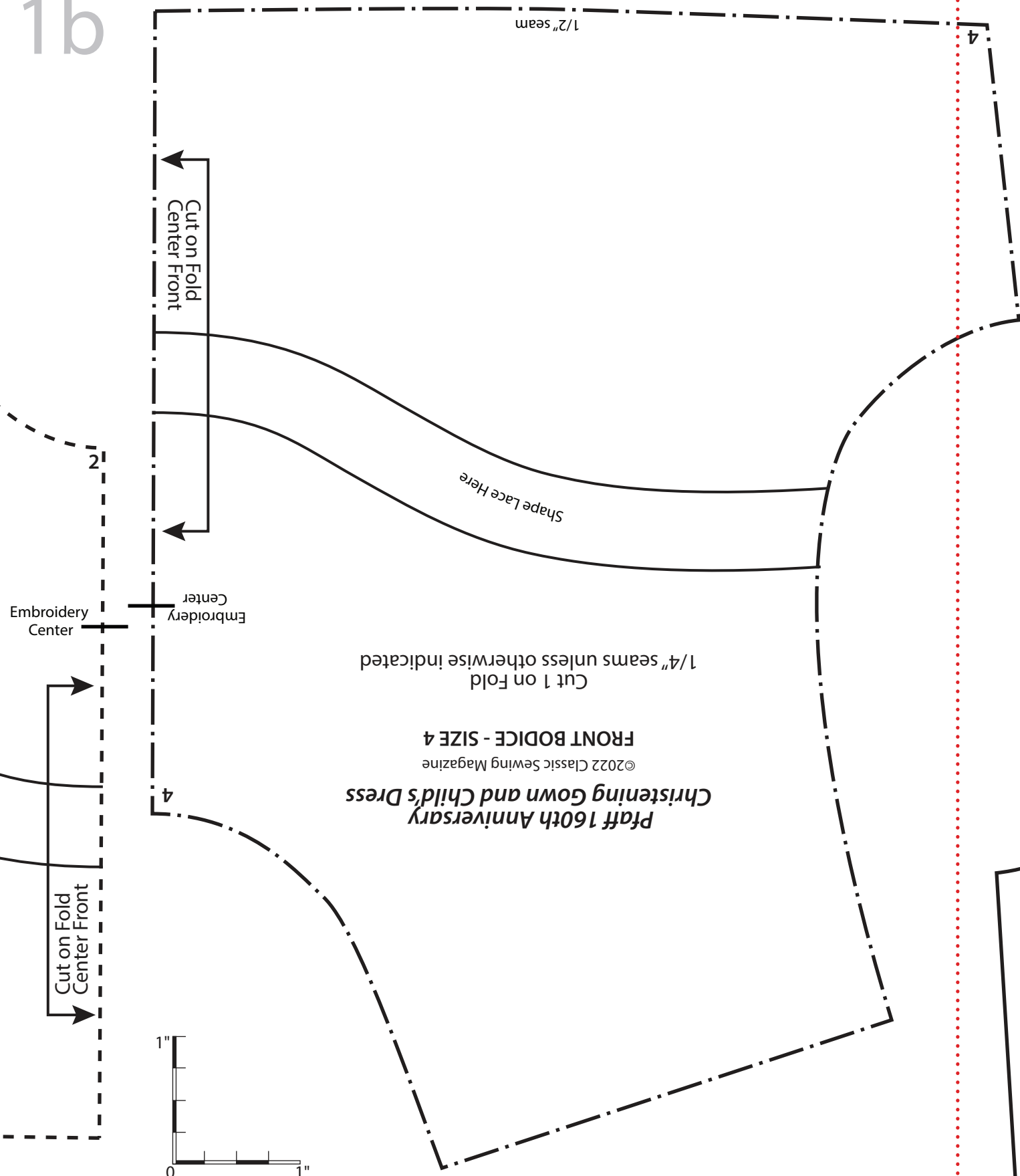
1/2" seam



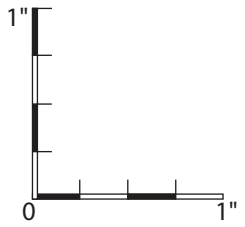
1b

Dress

ated



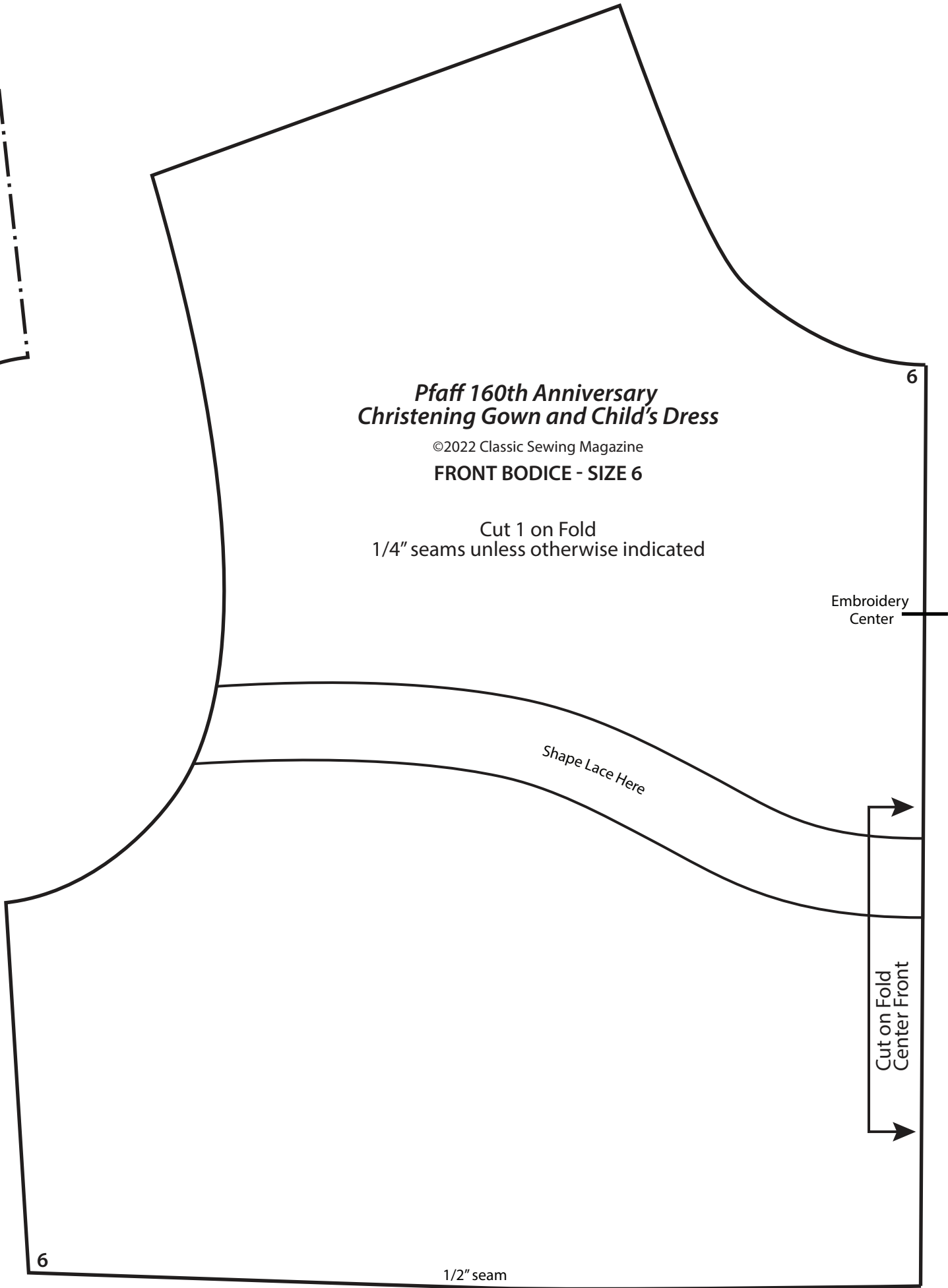
*Pfaff 160th Anniversary
Christening Gown and Child's Dress*
©2022 Classic Sewing Magazine
FRONT BODICE - SIZE 4
Cut 1 on Fold
1/4" seams unless otherwise indicated



Please use this scale to verify that you are printing at 100%

*Pfaff 160th Anniversary
Christening Gown and Child's Dress*
©2022 Classic Sewing Magazine
FRONT BODICE - SIZE 6

Cut 1 on Fold
1/4" seams unless otherwise indicated

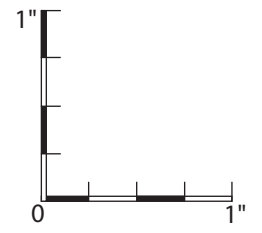


Embroidery
Center

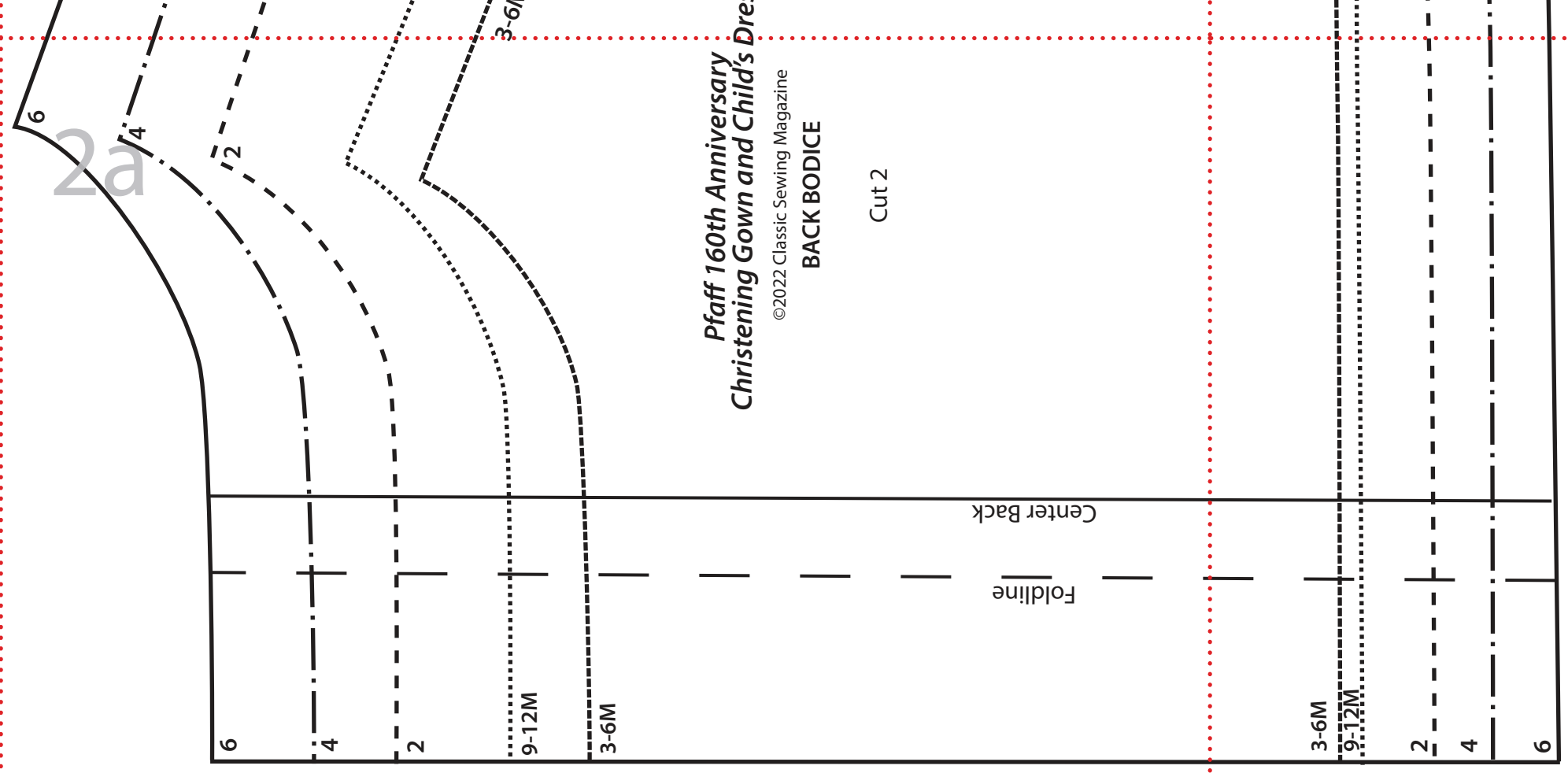
1/2" seam

**Pfaff 160th Anniversary
Christening Gown and Child's Dress**
©2022 Classic Sewing Magazine
BACK BODICE

Cut 2



Please use this scale to verify that you are printing at 100%



Assembling Full-size Pattern Printout

1. When preparing to print the pdf, make sure that you are printing it at 100% and that there is no scaling. In the print window, under *Page Sizing and Handling*, select *Custom Scale* and be sure it is 100%. Then under *Orientation* choose *Portrait* or *Landscape* (not Auto portrait/landscape). Check the preview to be sure you have the correct one.
2. To ensure the pattern has printed at the correct scale, check the size of the SCALE DIAGRAM. It should measure 1" x 1".
3. To begin assembling the pattern, cut off or fold the dotted margin around each page.
4. The pages are numbered in rows, so the first row of pages is numbered 1a, 1b, 1c, etc. Line up the rows and match the dotted lines together so they overlap. Tape the pages together. Use the illustrated guide to match each piece.

