

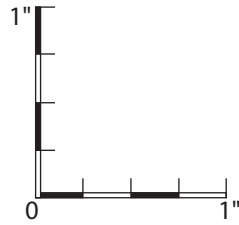
# 1a

## *Pfaff 160th Anniversary Christening Gown and Child's Dress*

©2022 Classic Sewing Magazine

### FRONT BODICE - SIZE 9M-12M

Cut 1 on Fold  
1/4" seams unless otherwise indicated



Please use this scale to verify that you are printing at 100%

9-12M

Embroidery  
Center

Shape Lace Here

Cut on Fold  
Center Front

Cut on Fold  
Center Front

Embroidery  
Center

3-6M

9-12M

1/2" seam

6

4

2

9-12M

3-6M

9-12

3-6M

ry's Dress

1b

1/2" seam

3-6M

Shape Lace Here

Cut 1 on Fold  
1/4" seams unless otherwise indicated

FRONT BODICE - SIZES 3M-6M

©2022 Classic Sewing Magazine

*Pfaff 160th Anniversary  
Christening Gown and Child's Dress*

***Pfaff 160th Anniversary  
Christening Gown and Child's Dress***

©2022 Classic Sewing Magazine

**FRONT BODICE - SIZE 2**

Cut 1 on Fold  
1/4" seams unless otherwise indicated

Shape Lace Here

6

4

2

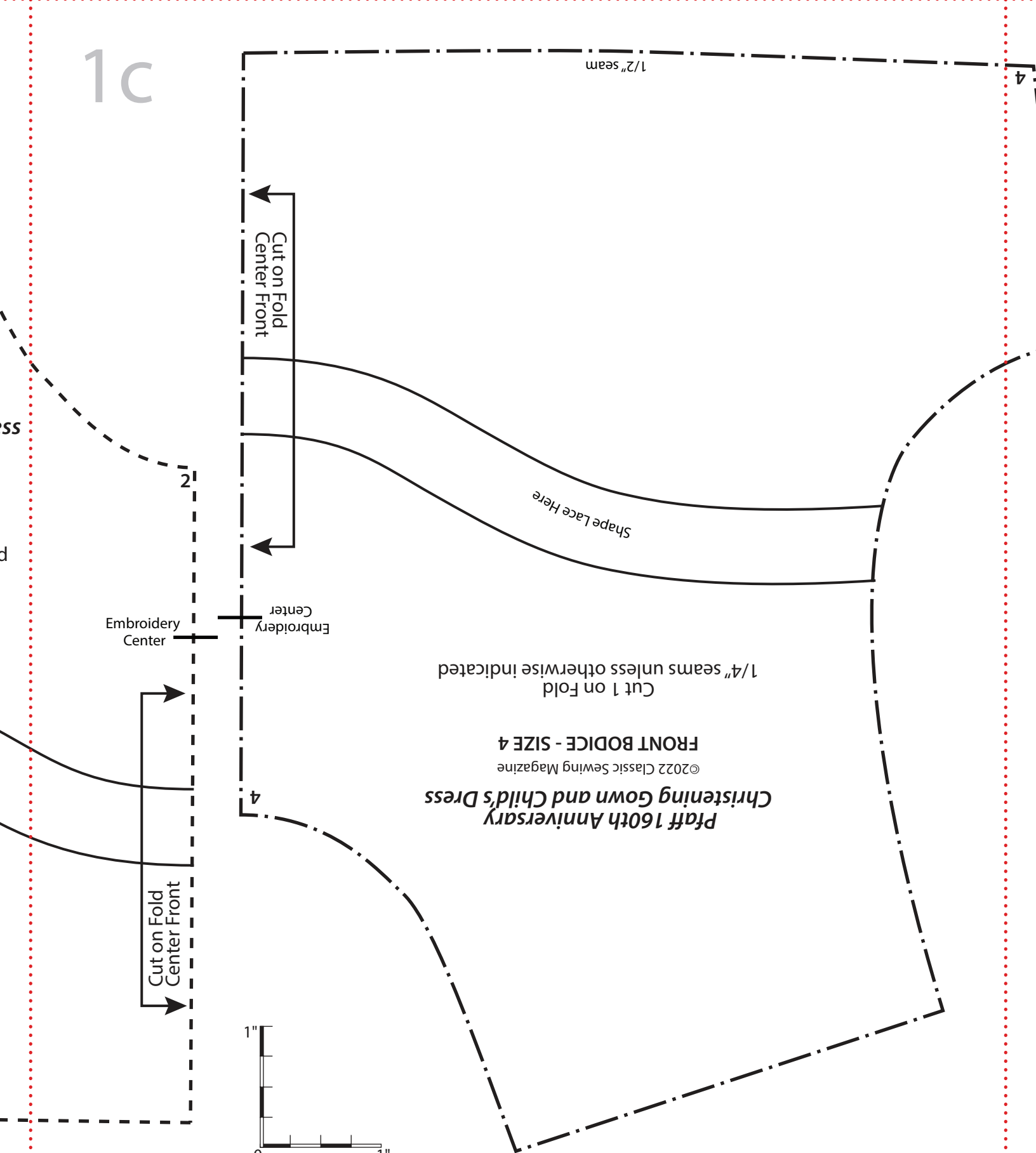
9-12M

3-6M

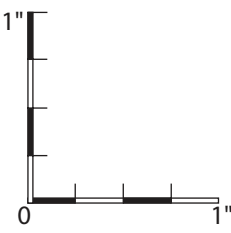
2

1/2" seam

1c



*Pfaff 160th Anniversary  
Christening Gown and Child's Dress*  
©2022 Classic Sewing Magazine  
FRONT BODICE - SIZE 4  
Cut 1 on Fold  
1/4" seams unless otherwise indicated



Please use this scale to verify that you are printing at 100%

Cut on Fold  
Center Front

Cut on Fold  
Center Front

Shape Lace Here

1/2" seam

Embroidery  
Center

Embroidery  
Center

2"

4"

4"

SS

d

1d

***Pfaff 160th Anniversary  
Christening Gown and Child's Dress***

©2022 Classic Sewing Magazine

**FRONT BODICE - SIZE 6**

Cut 1 on Fold  
1/4" seams unless otherwise indicated

Embroidery  
Center

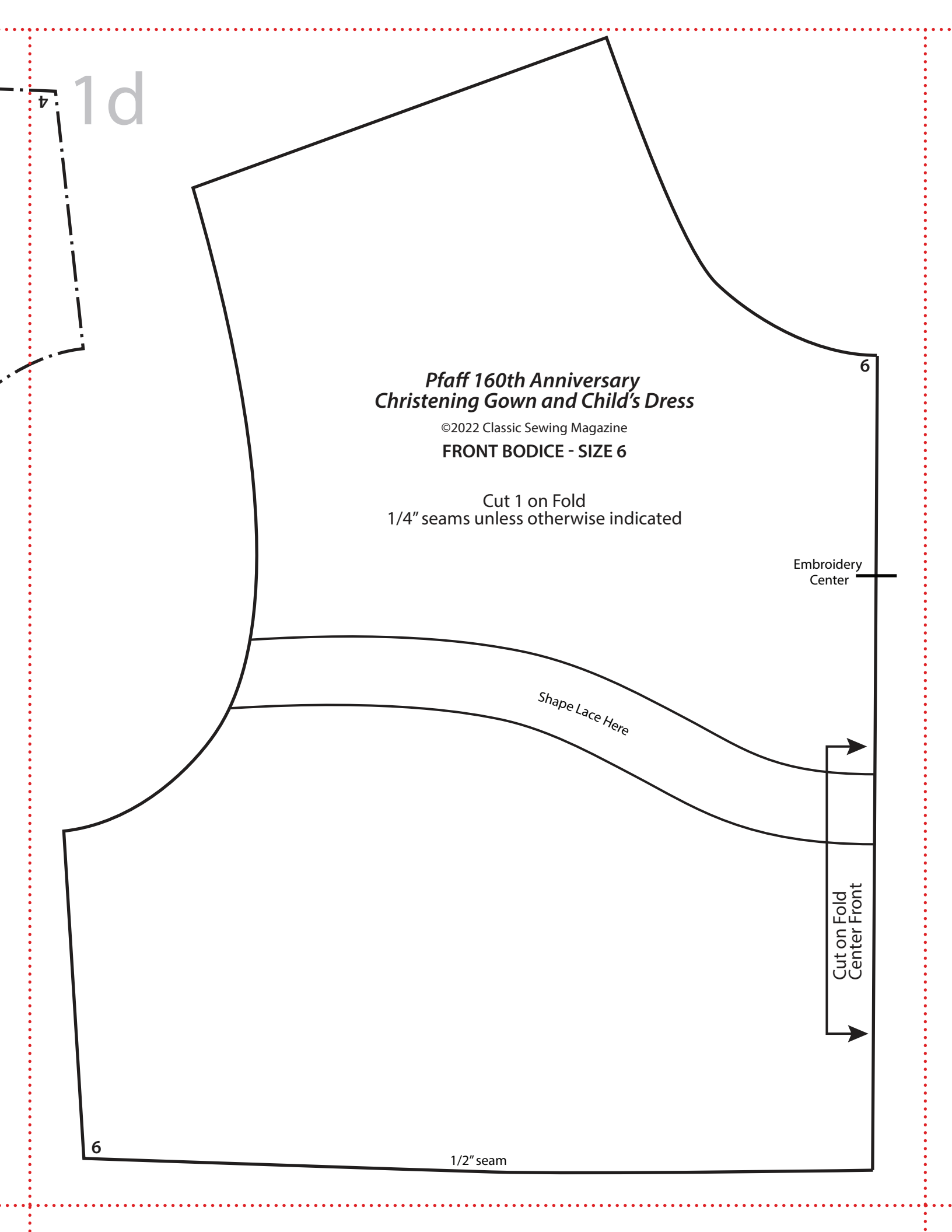
Shape Lace Here

Cut on Fold  
Center Front

6

6

1/2" seam

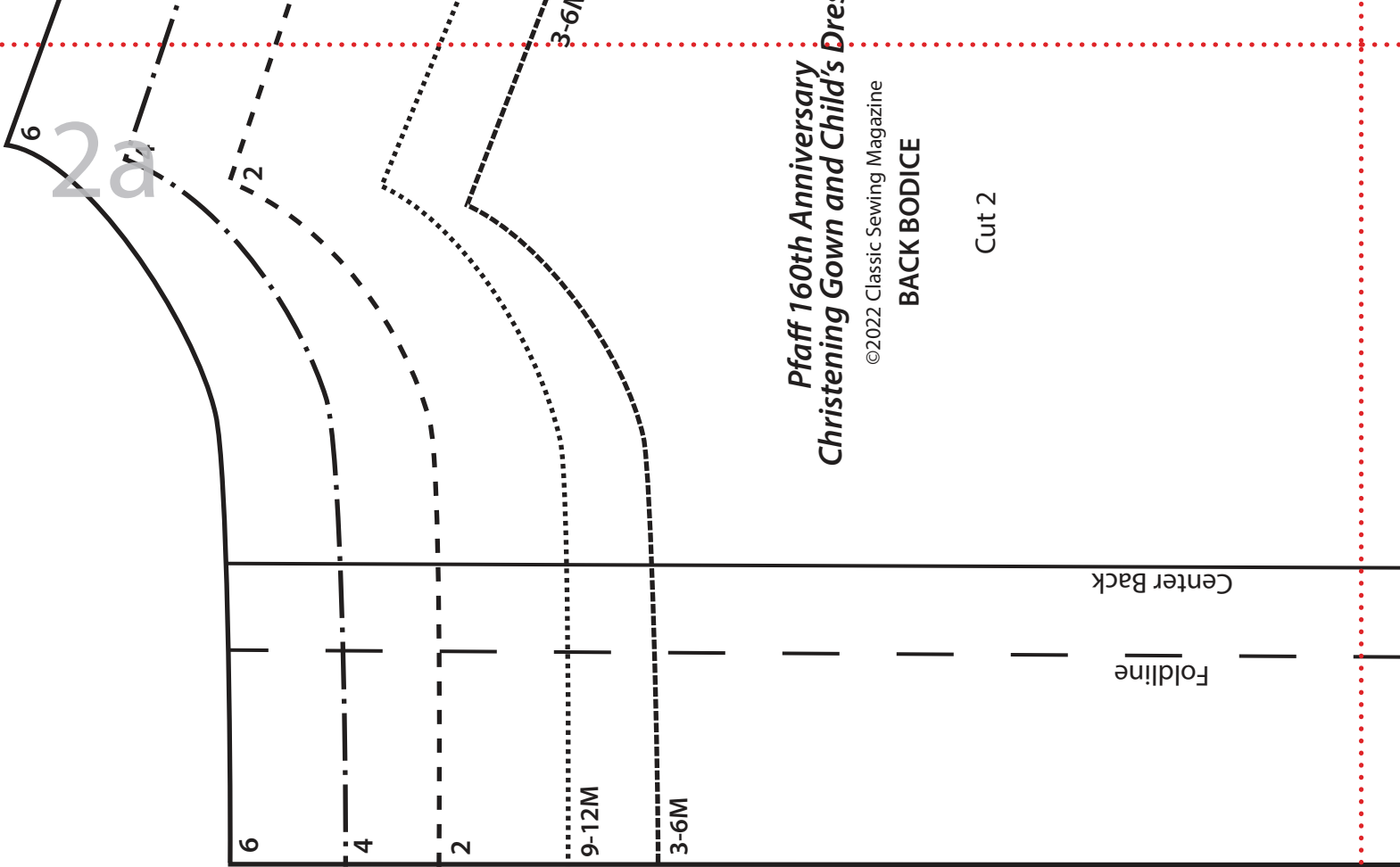


# Pfaff 160th Anniversary Christening Gown and Child's Dress

©2022 Classic Sewing Magazine

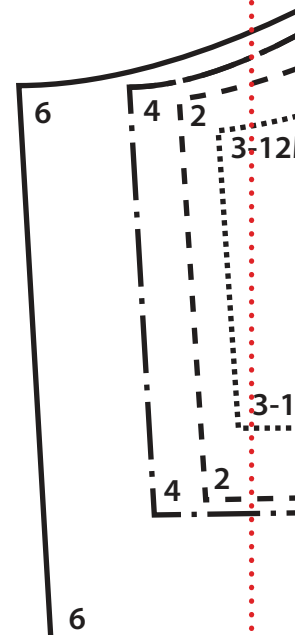
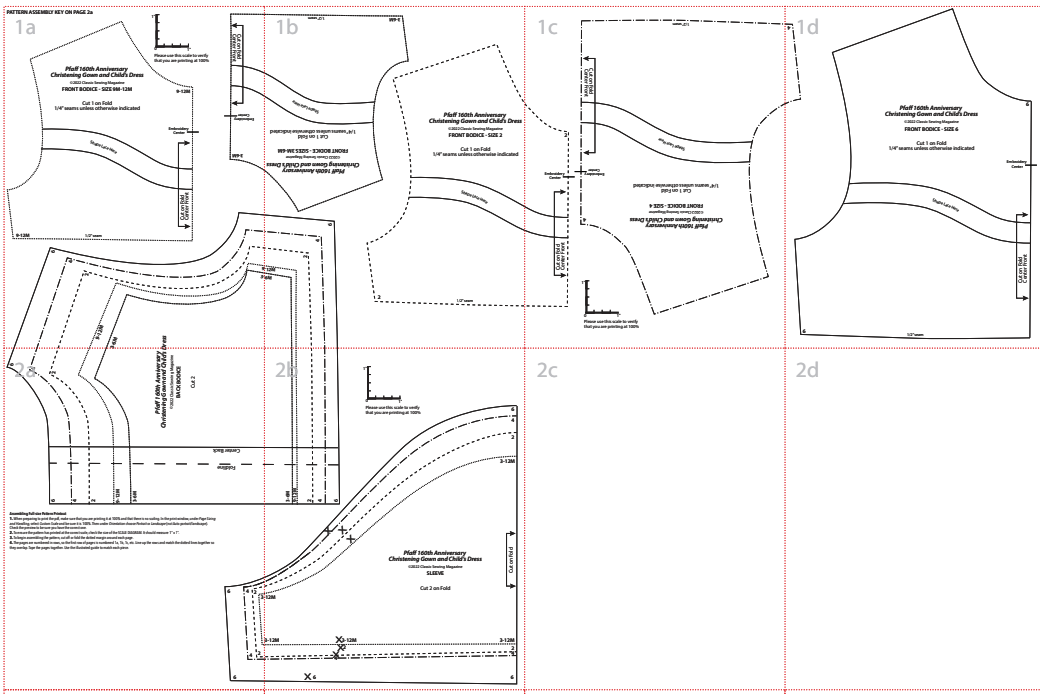
## BACK BODICE

Cut 2

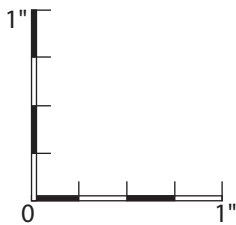


### Assembling Full-size Pattern Printout

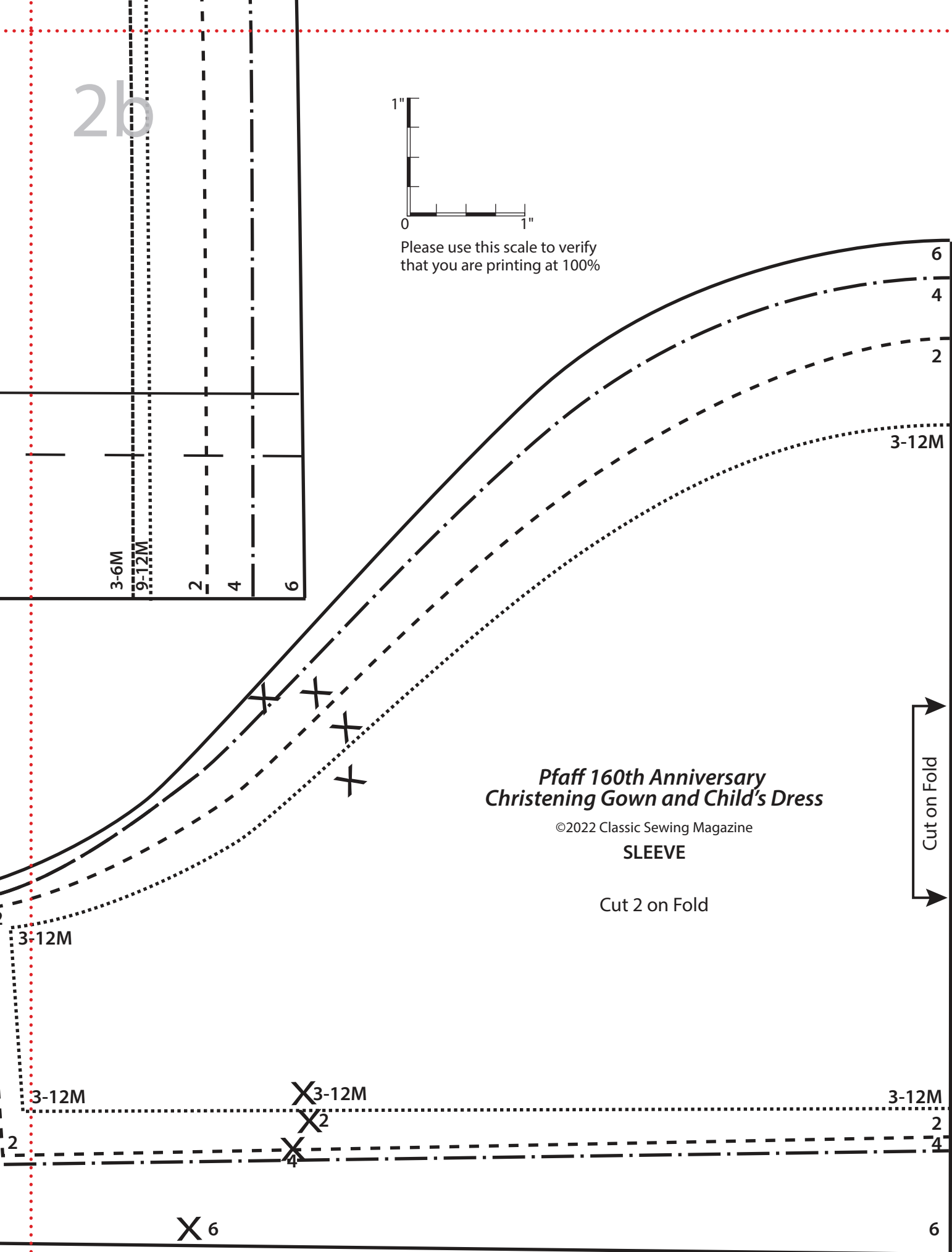
1. When preparing to print the pdf, make sure that you are printing it at 100% and that there is no scaling. In the print window, under *Page Sizing and Handling*, select *Custom Scale* and be sure it is 100%. Then under *Orientation* choose *Portrait* or *Landscape* (not Auto portrait/landscape). Check the preview to be sure you have the correct one.
2. To ensure the pattern has printed at the correct scale, check the size of the SCALE DIAGRAM. It should measure 1" x 1".
3. To begin assembling the pattern, cut off or fold the dotted margin around each page.
4. The pages are numbered in rows, so the first row of pages is numbered 1a, 1b, 1c, etc. Line up the rows and match the dotted lines together so they overlap. Tape the pages together. Use the illustrated guide to match each piece.



2b



Please use this scale to verify that you are printing at 100%



3-6M

9-12M

2

4

6

6

4

2

3-12M

*Pfaff 160th Anniversary  
Christening Gown and Child's Dress*

©2022 Classic Sewing Magazine

**SLEEVE**

Cut 2 on Fold

Cut on Fold

3-12M

3-12M

X 3-12M

3-12M

X 2

2

X 4

4

X 6

6