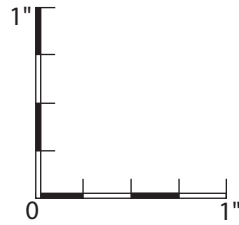
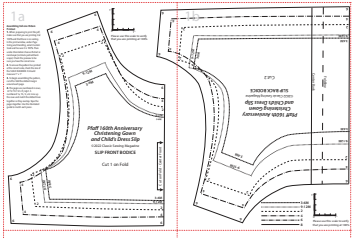


1a

Assembling Full-size Pattern Printout

1. When preparing to print the pdf, make sure that you are printing it at 100% and that there is no scaling. In the print window, under *Page Sizing and Handling*, select *Custom Scale* and be sure it is 100%. Then under *Orientation* choose *Portrait* or *Landscape* (not Auto portrait/landscape). Check the preview to be sure you have the correct one.
2. To ensure the pattern has printed at the correct scale, check the size of the SCALE DIAGRAM. It should measure 1" x 1".
3. To begin assembling the pattern, cut off or fold the dotted margin around each page.
4. The pages are numbered in rows, so the first row of pages is numbered 1a, 1b, 1c, etc. Line up the rows and match the dotted lines together so they overlap. Tape the pages together. Use the illustrated guide to match each piece.



Please use this scale to verify that you are printing at 100%

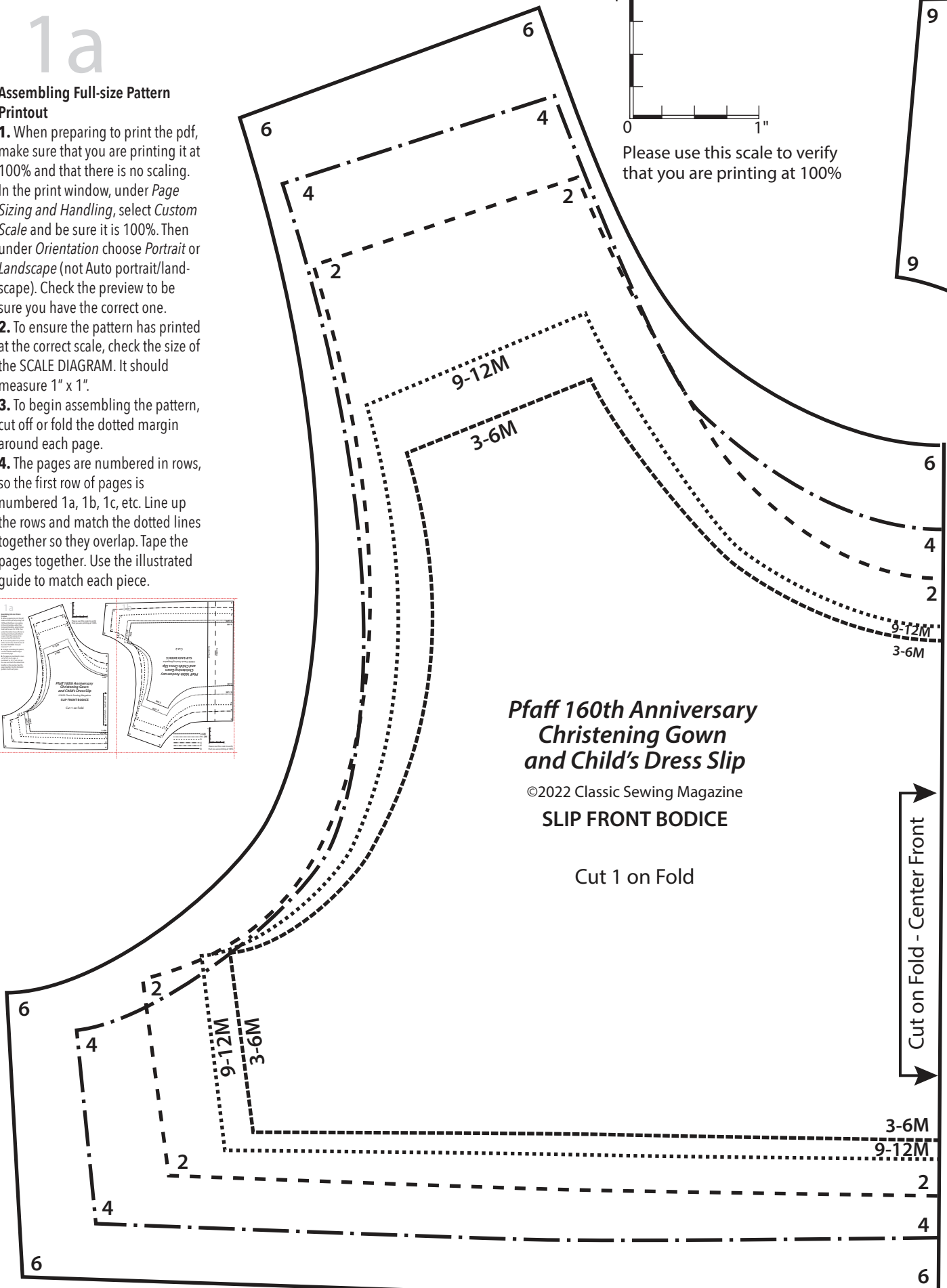
Pfaff 160th Anniversary Christening Gown and Child's Dress Slip

©2022 Classic Sewing Magazine

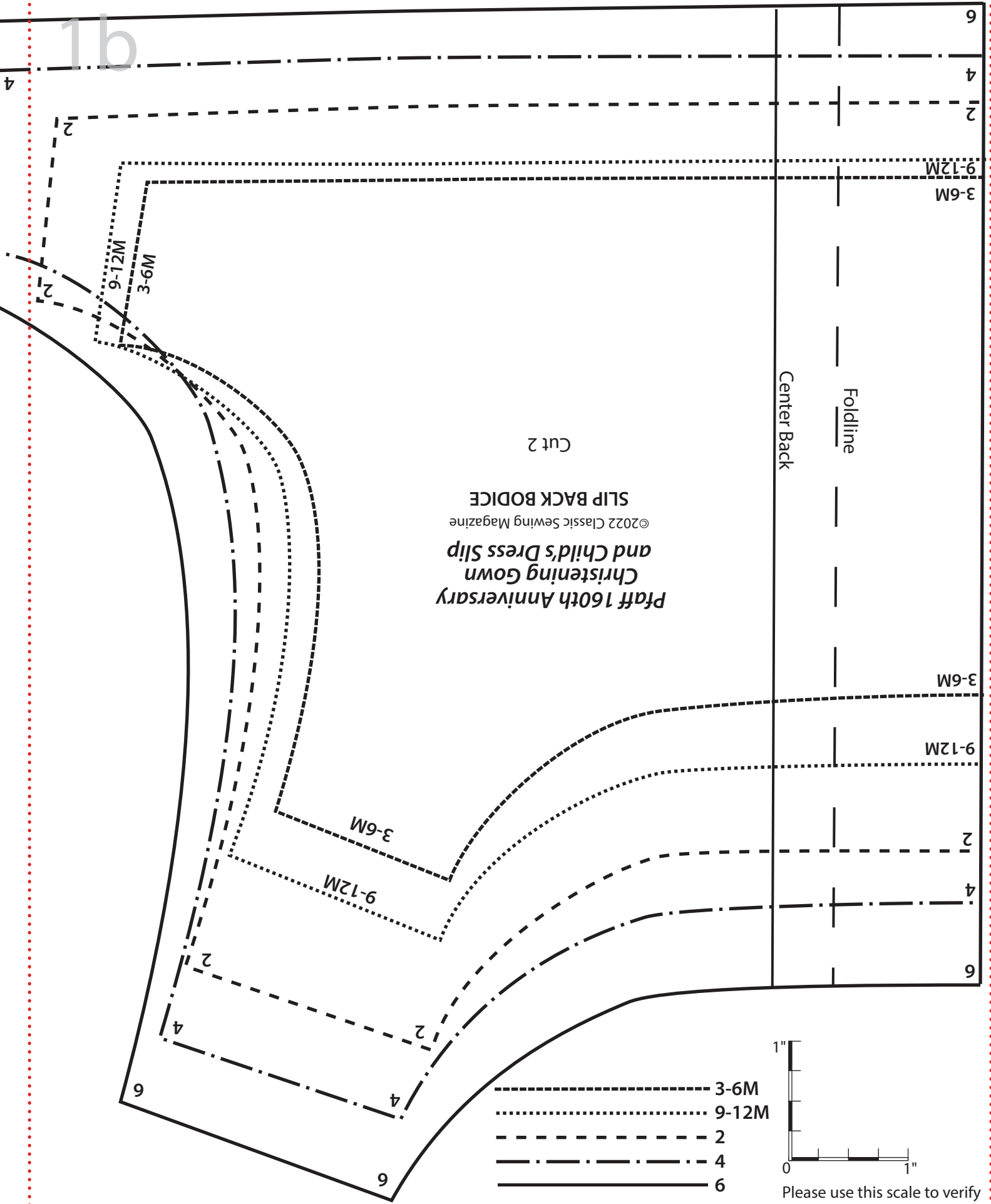
SLIP FRONT BODICE

Cut 1 on Fold

Cut on Fold - Center Front



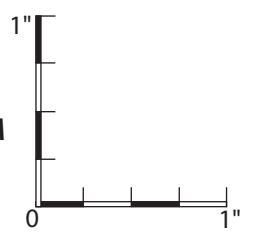
1b



Pfaff 160th Anniversary
Christening Gown
and Child's Dress Slip
 ©2022 Classic Sewing Magazine
 SLIP BACK BODICE
 Cut 2

Center Back
 Foldline

- 3-6M
- 9-12M
- - - 2
- . - . 4
- 6



Please use this scale to verify that you are printing at 100%

6
4
2
9-12M
3-6M
3-6M
9-12M
2
4
6

4

6

6

4

4

2

2

9-12M

3-6M

9-12M

3-6M

9-12M

3-6M

9-12M

3-6M

2

2